

# PRODUCT SPECIFICATION SHEET

PART: G101-211

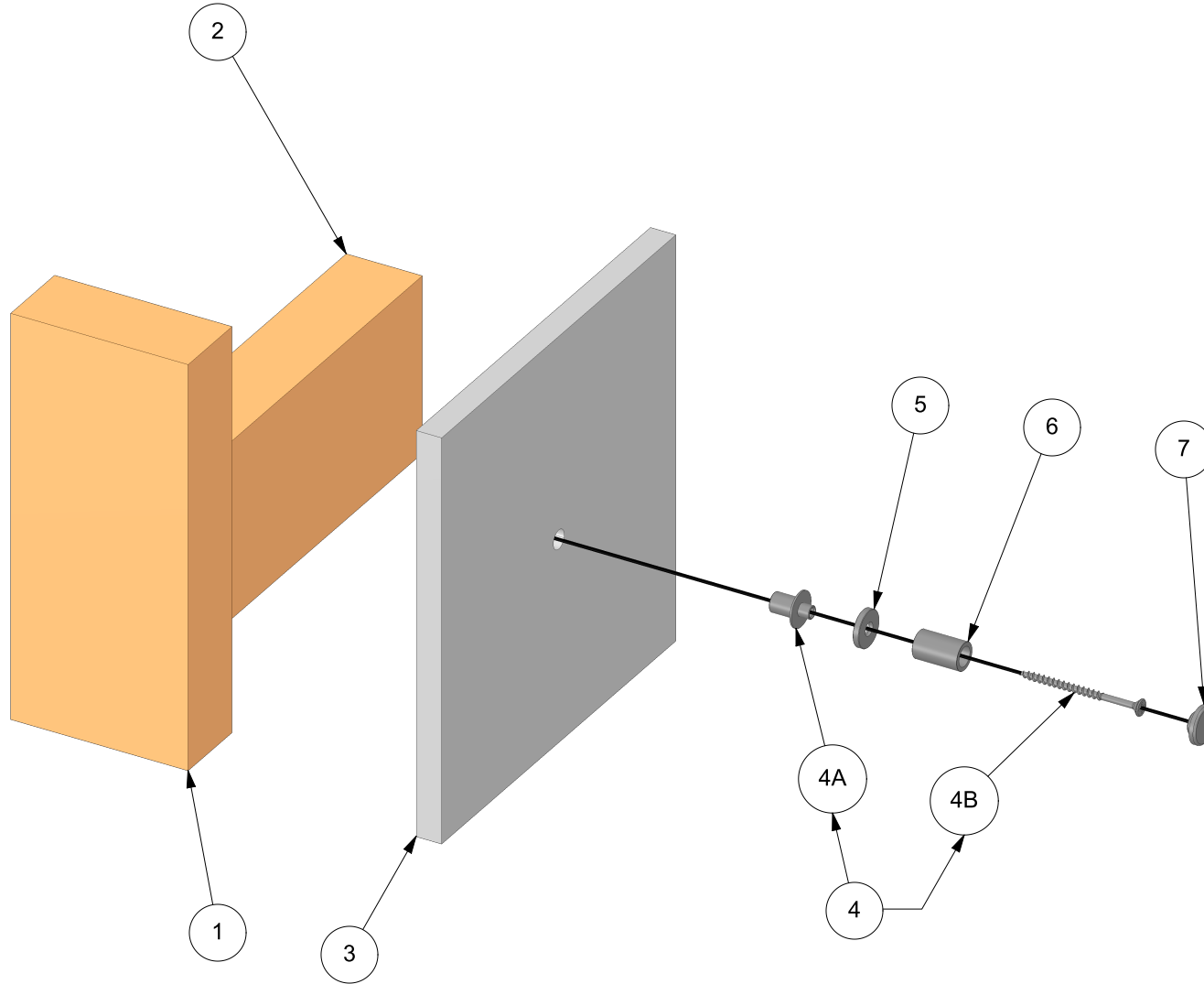
FASTENER SYSTEM WORKS WITH ALL GYPSUM WALLBOARD HOOK MODELS  
 FASTENER SYSTEM ONLY WORKS WITH WOOD BLOCKING ( DO NOT USE WALL ANCHORS )  
 REFER TO INSTALLATION INSTRUCTIONS BEFORE USE

PROMESSA™ SERIES

TEE HOOK ( CONTEMPORARY ) KIT

[ GYPSUM WALLBOARD SYSTEMS ]

FINISHES: PC, BN, ORB



TW-ENG5



TileWare Products

www.tilewareproducts.com

Office (828) 322-9273 Fax (828) 304-1076

ERP PART #	REFERENCED ABOVE	APPROVALS	DATE
DWG #	580A	RLS	5/10/16
SHEET 1 OF 3	SCALE 1:3		
WEIGHT:	0.074 LB	CUBED:	0.294 IN <sup>3</sup>

# PRODUCT SPECIFICATION SHEET

PART: G101-211

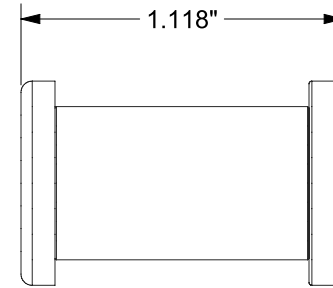
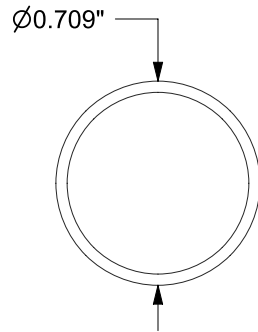
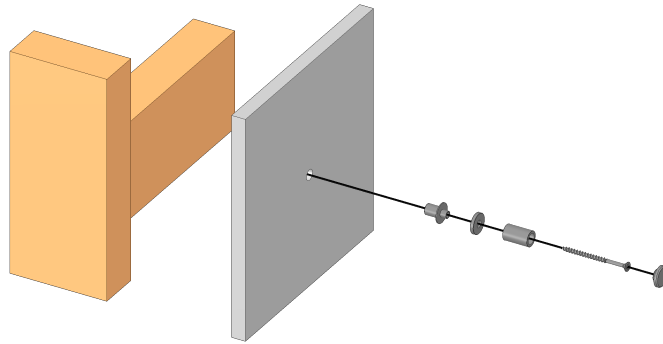
FASTENER SYSTEM WORKS WITH ALL GYPSUM WALLBOARD HOOK MODELS  
 FASTENER SYSTEM ONLY WORKS WITH WOOD BLOCKING ( DO NOT USE WALL ANCHORS )  
 REFER TO INSTALLATION INSTRUCTIONS BEFORE USE

PROMESSA™ SERIES

TEE HOOK ( CONTEMPORARY ) KIT

[ GYPSUM WALLBOARD SYSTEMS ]

FINISHES: PC, BN, ORB



TW-ENG5



TileWare Products  
 www.tilewareproducts.com

ERP PART #	REFERENCED ABOVE	APPROVALS	DATE
DWG #	580A	RLS	5/10/16
SHEET 2 OF 3	SCALE 3:2		
WEIGHT:	0.074 LB	CUBED:	0.294 IN <sup>3</sup>

Office (828) 322-9273 Fax (828) 304-1076

# PRODUCT SPECIFICATION SHEET

**PART: G101-211**



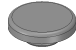


FASTENER SYSTEM WORKS WITH ALL GYPSUM WALLBOARD HOOK MODELS  
 FASTENER SYSTEM ONLY WORKS WITH WOOD BLOCKING ( DO NOT USE WALL ANCHORS )  
 REFER TO INSTALLATION INSTRUCTIONS BEFORE USE

PROMESSA™ SERIES

TEE HOOK ( CONTEMPORARY ) KIT

[ GYPSUM WALLBOARD SYSTEMS ]

FINISHES: PC, BN, ORB

MODEL IMAGE	REF #	PART #	DESCRIPTION	MATERIAL	QTY	MODEL IMAGE	REF #	PART #	DESCRIPTION	MATERIAL	QTY
	1		STUD WALL PARTITION	WOOD			5	C220-006	WASHER	BRASS	1
	2		STUD WALL BLOCKING	WOOD			6	C220-002	TEE HOOK SLEEVE	BRASS	1
	3		WALLBOARD PANEL	GYPSUM PANEL			7	C220-005	CONTEMPORARY CAP	BRASS	1
	4	PG100-507	HOOK GYPSUM WALLBOARD FASTENER	ASSEMBLY	1						
	4A	C200-044	SPACER	ALUMINUM	1						
	4B	C200-041	# 8 X 2 1/2" PHILLIPS FLAT HEAD SCREW	ZINC - PLATED	1						

TW-ENG5



**TileWare Products**  
 www.tilewareproducts.com

ERP PART #	REFERENCED ABOVE	APPROVALS	DATE
DWG #	580A	RLS	5/10/16
SHEET 3 OF 3	SCALE N/A		
WEIGHT:	0.074 LB	CUBED:	0.294 IN <sup>3</sup>

Office (828) 322-9273 Fax (828) 304-1076